



KNIT | SKILL LEVEL: **EASY**

MATERIALS

Caron™ Simply Me™ Mosaic (5 oz/140 g; 173 yds/158 m)
 High Tide (65001) or **4 balls or 568 yds/519.5 m**
 Sunset (65006)

Sizes U.S. 9 (5.5 mm) and U.S. 10 (6 mm) Susan Bates®
 Silvalume® knitting needles or size needed to obtain gauge.
 Susan Bates® yarn needle.

MEASUREMENTS

Approx 21 x 54" [53.5 cm x 137 cm].

GAUGES

16 sts and 20 rows = 4" [10 cm] in stocking st with
 larger needles.



ABBREVIATIONS

Approx = Approximately

Beg = Beginning

Center dec = Slip next 2 stitches at once as if to knit. K1. P2sso. 2 sts are decreased – Center knit stitch will be on top of decrease

Ch = Chain(s)

Cont = Continue

K = Knit

K2tog = Knit next 2 stitches together

Pat = Pattern

P2sso = Pass 2 slipped stitches over

Rep = Repeat

RS = Right side

Sp(s) = Space(s)

Ssk = Slip next 2 stitches knitwise one at a time.

Pass them back onto left-hand needle, then knit through back loops together

St(s) = Stitch(es)

WS = Wrong side

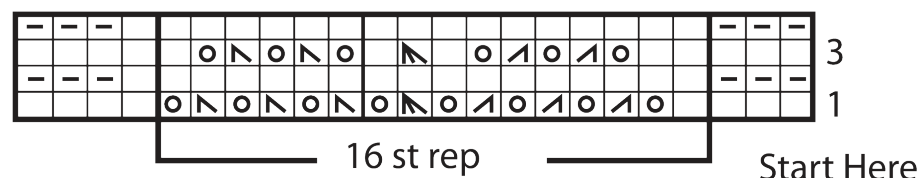
Yo = Yarn over

These 4 rows form pat.

Cont in pat until work from beg measures approx 53½" [136 cm], ending on a 3rd row.

With smaller needles, knit 3 rows (garter st).

Cast off.



KEY

□ = Knit on RS rows. Purl on WS rows.

▢ = Purl on RS row. Knit on WS rows.

⊙ = yo

⊞ = ssk

⊞ = K2tog

⊞ = Center decrease



INSTRUCTIONS

With smaller needles, cast on 71 sts.

Knit 3 rows (garter st), noting first row is WS.

Change to larger needles and proceed as follows:

1st row: (RS). K3. *K1. (yo. K2tog) 3 times. yo. Center dec. yo. (ssk. yo) 3 times. Rep from * to last 4 sts. K4.

2nd row: K3. Purl to last 3 sts. K3.

3rd row: K3. *K2. (yo. K2tog) twice. yo. K1. Center dec. K1. (yo. ssk) twice. yo. K1. Rep from * to last 4 sts. K4.

4th row: As 2nd row.