



VERSION 2

VERSION 1



CROCHET | SKILL LEVEL: EASY

MATERIALS

VERSION 1

Red Heart® All in One™ Flower Power™

(8.8 oz/250 g; 440 yds/402 m)

Contrast A Red Hot Phlox (2007)

2 balls or 17 Motifs

Contrast B Marigold (2005)

1 ball or 8 Motifs

VERSION 2

Red Heart® All in One™ Granny Square™

(8.8 oz/250 g; 440 yds/402 m)

Contrast A Aran – Cream (2015)

2 balls or 17 Motifs

Red Heart® All in One™ Flower Power™

(8.8 oz/250 g; 417 yds/381 m)

Contrast B Dried Bouquet (2008)

1 ball or 8 Motifs

Size U.S. 1/9 (5.5 mm) Susan Bates® Silvalume® crochet hook
or size needed to obtain gauge. Susan Bates® yarn needle.
 20" [51 cm] square pillow form.

MEASUREMENTS

Approx 30" [76 cm] square before assembly.

Finished size: 20" [51 cm] square.

GAUGE

Motif = Approx 6" [15 cm] square.

ABBREVIATIONS

Approx = Approximately
Beg = Beginning
Ch = Chain(s)
Dc = Double crochet
Hdc = Half double crochet
Rem = Remain(ing)
Rep = Repeat
Rnd(s) = Round(s)

RS = Right side
Sc = Single crochet
Sl st = Slip stitch
Sp(s) = Space(s)
St(s) = Stitch(es)
Tog = Together
Tr = Treble crochet
WS = Wrong side

INSTRUCTIONS

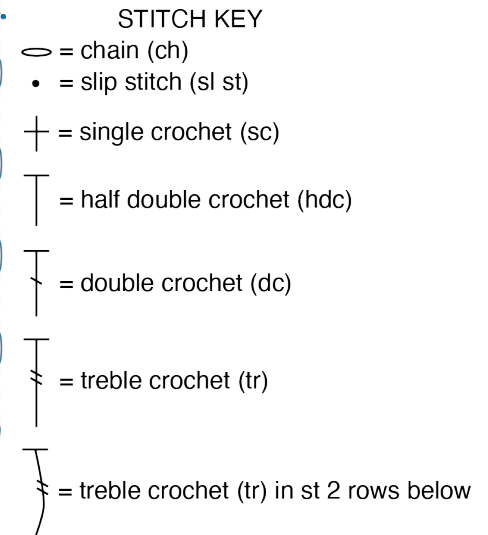
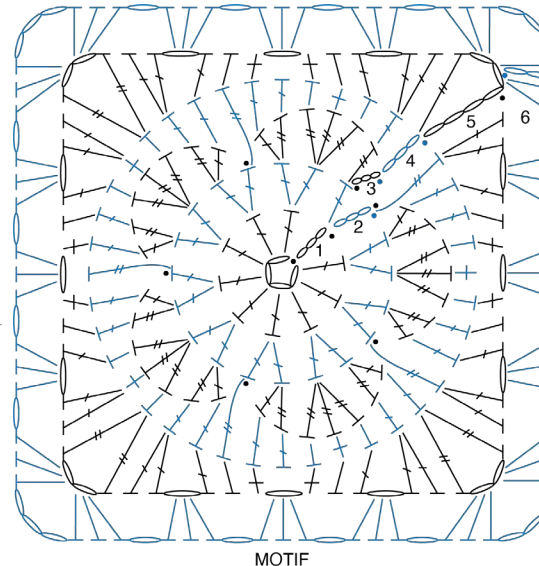
Flower Motif

Notes:

- Motifs begin with Color 1 (shortest color rep) from center of pull-skein, leaving a 4" [10 cm] tail to weave in.
- 2nd and 3rd rnds will be worked in Color 2.
- 4th, 5th, and 6th rnds will be worked in Color 3.
- If too much color is left at end of rnd, pull back some sts and slightly loosen gauge to re-work sts and finish at color change. If too little color is left, pull back some sts and slightly tighten gauge to re-work sts and finish at color change.
- Leave approx 24" [61 cm] tail of 3rd color at end of Motif.
- Ch 3 at beg of rnd counts as dc.
- Ch 2 at beg of rnd **does not** count as st.
- Join all rnds with sl st to first st unless otherwise stated.

Version 1: Make 17 in A and 8 in B.

Version 2: Make 8 in B.



VERSION 1



See Diagram on page 2.

With Color 1, ch 4. Join with sl st to first ch to form ring.

1st rnd: Ch 3. 9 dc in ring. Join. 10 dc. Color 1 complete.

2nd rnd: Ch 3. 1 dc in same sp as sl st. 2 dc in each dc around. Join. 20 dc.

3rd rnd: Sl st in next dc. (Ch 3. 1 tr) in same st as last sl st. 3 tr in next dc. (1 tr. 1 dc) in next dc. Sl st in next dc. *(1 dc. 1 tr) in next dc. 3 tr in next dc. (1 tr. 1 dc) in next dc. Sl st in next dc. Rep from * around, ending by joining with sl st to top of ch-3 of previous (2nd) rnd. Color 2 complete.

4th rnd: Sl st in first dc (top of ch-3 of 3rd rnd), *to beg rnd at start of first Petal*. Ch 3. *1 dc in next tr. 1 hdc in next tr. 1 sc in next tr. 1 hdc in next tr. 1 dc in each of next 2 sts. 1 tr in dc of 2nd rnd below sl st.** 1 dc in next dc. Rep from * 3 times more, then from * to ** once. Join.

5th rnd: Ch 6 (counts as tr and ch-2). 1 tr in same sp as sl st. *2 dc in next st. Ch 1. 1 dc in next st. 1 hdc in next st. 1 sc in next st. Ch 1. Skip next st. 1 sc in next st. 1 hdc in next st. 1 dc in next st. Ch 1. 2 dc in next st.** (1 tr. Ch 2. 1 tr) all in next st. Rep from * twice more, then from * to ** once. Join to 4th ch of ch-6.

6th rnd: Sl st in next ch-2 sp. Ch 2 (**does not** count as st). 1 hdc in same ch-2 sp. Ch 3. 3 hdc in same ch-2 sp. Ch 1. *(3 hdc. Ch 1) in each ch-1 sp to next corner ch-2 sp.** (3 hdc. Ch 3. 3 hdc) all in next ch-2 sp. Ch 1. Rep from * twice more, then from * to ** once. 2 hdc in first ch-2 sp. Join. Fasten off.

VERSION 2 only: Granny Square Motif

Notes:

- Motifs begin with Color 1 (shortest color rep) from center of pull-skein, leaving a 4" [10 cm] tail to weave in.
- Each color aligns with 1 rnd in the Motif with 5 colors in total. If too much color is left at end of rnd, pull back some sts and slightly loosen gauge to re-work sts and finish at color change. If too little color is left, pull back some sts and slightly tighten gauge to re-work sts and finish at color change.
- When Motif is complete, cut yarn where Color 5 (longest color rep) ends, leaving a tail for weaving in. Begin next Motif with Color 1 and repeat 5 rnds for each Motif.
- Ch 3 at beg of rnd counts as dc.
- Ch 6 at beg of rnds counts as dc and ch-3 sp.
- Join all rnds with sl st to 3rd ch of ch-6 unless otherwise indicated.

See Diagram on page 4.

With A, make 17.

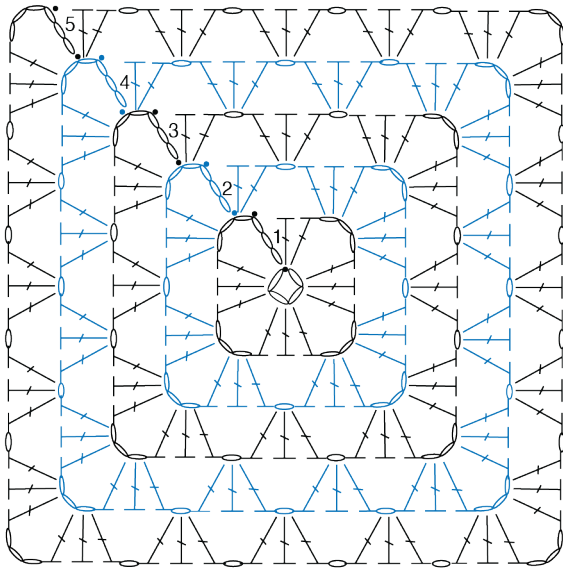
With Color 1, ch 4. Join with sl st to first ch to form ring.

1st rnd: (RS). Ch 6. (3 dc. Ch 3) 3 times in ring. 2 dc in ring. Join.

2nd rnd: Sl st in next ch-3 sp. Ch 6. 3 dc in same sp as sl st. *Ch 1. (3 dc. Ch 3. 3 dc) in next ch-3 sp. Rep from * twice more. Ch 1. 2 dc in first ch-3 sp. Join.

3rd rnd: Sl st in next ch-3 sp. Ch 6. 3 dc in same sp as sl st. *Ch 1. 3 dc in next ch-1 sp. Ch 1. (3 dc. Ch 3. 3 dc) in next ch-3 sp. Rep from * twice more. Ch 1. 3 dc in last ch-1 sp. Ch 1. 2 dc in first ch-3 sp. Join.

4th and 5th rnds: Sl st in next ch-3 sp. Ch 6. 3 dc in same sp as sl st. *(Ch 1. 3 dc) in each ch-1 sp to next ch-3 sp. Ch 1.** (3 dc. Ch 3. 3 dc) in next ch-3 sp. Rep from * twice more, then from * to ** once. 2 dc in first ch-3 sp. Join. Fasten off.



STITCH KEY

- = chain (ch)
- = slip stitch (sl st)
- ┐ = double crochet (dc)



VERSION 2

FINISHING

With rem yarn from A, sew Motifs tog following Assembly Diagram.

With WS facing, fold 3 corners to meet in center, as shown in diagram, to form a square.

With A, sew seams, leaving 4th corner open to insert pillow form. Insert pillow form. Sew rem seam.

B	A	A	A	B
A	A	B	A	A
A	B	A	B	A
A	A	B	A	A
B	A	A	A	B

ASSEMBLY DIAGRAM

