



KNIT
SKILL LEVEL
EASY

Designed by Trish Warrick



What you will need:

RED HEART® Soft®: 2 balls each 9623 Spearmint and 9522 Leaf; 3 balls each 9388 Wheat and 9440 Light Grey Heather

Susan Bates® Knitting Needles: 5mm [US 8]

Susan Bates® Circular Knitting Needles: 5mm [US 8] – 36" (94.4 cm)

Yarn needle; 5 stitch markers.

GAUGE: 19 sts = 4" (10 cm); 22 rows = 4" (10 cm) in Trinity or Rice st. **CHECK YOUR GAUGE.** Use any size needles to obtain the gauge.



RED HEART® Soft®, Art. E728 available in solid color 5 oz (140 g), 256 yd (234 m) and print 4 oz (113 g), 204 yd (187 m) balls

SHOP KIT

Autumn Throw

A variety of textures and techniques make this classic sampler throw enjoyable to knit. Softer colors allow the design to shine!

Throw measures 49½" x 49½"
(126 cm x 126 cm).

Special Abbreviations

M3 (Make 3 sts) = Knit the next st but do not slip it off the needle; bring the yarn to the front, between the needles, and purl the same st; return the yarn to the back and knit the same st again; then slip the 3 sts off the needle.

MB (Make Bobble) = M3, turn, purl these 3 sts, turn, knit these 3 sts, turn, purl these 3 sts, turn, slip the first st purlwise, K2tog, pass the slipped st over the K2tog.

C2B (Cross 2 back) = Skip one st, knit the next st working in front of the skipped one, but do not slip it off the needle; then knit the skipped st and slide them both off the needle together.

C2F (Cross 2 front) = Skip one st; knit the next st through the back loop working behind the skipped one, but do not slip it off the needle; then knit the skipped st and slide them both off the needle together.

C3B (Cross 3 back) = Skip 2 sts; knit the next st working in front of the skipped ones but leave it on the needle; knit the first skipped st and slip it off the needle, then knit the 2nd skipped st and slip both remaining sts off the needle.

T2B (Twist 2 back) = Skip one st; knit the next st working in front of the skipped one; purl the skipped st then slip both off the needle together.

T2F (Twist 2 front) = Skip one st; purl the next st working behind the skipped one, but do not slip it off the needle; knit the skipped st and slide both off the needle together.

Stitch Patterns

Trinity Stitch (Work over a multiple of 4 sts plus 2 sts.)

Row 1 (Right Side): Purl.

Row 2: K1, * M3, P3tog; repeat from * to last st; K1.

Row 3: Purl.

Row 4: K1, * P3tog, M3; repeat from * to last st; K1.

Repeat Rows 1-4 for Trinity Stitch.

Little Chain (Work over 8 sts.)

Note: The 2 Setup Rows are not repeated.

First Setup Row (Right Side): P2, K4, P2.

2nd Setup Row: K2, P4, K2.

Row 1: P2, C2B, C2F, P2.

Row 2: K2, P4, K2.

Row 3: P2, C2F, C2B, P2.

Row 4: K2, P4, K2.

Repeat Rows 1-4 for Little Chain.

Bobble Diamond (Work over 13 sts.)

Note: The 2 Setup Rows are not repeated.

First Setup Row (Right Side): P5, K3, P5.

2nd Setup Row: K5, P3, K5.

Row 1: P5, C3B, P5.

Row 2: K5, P3, K5.

Row 3: P4, C2B, K1, C2F, P4.

Row 4: K4, P5, K4.

Row 5: P3, C2B, K1, MB, K1, C2F, P3.

Row 6: K3, P7, K3.

Row 7: P2, C2B, K5, C2F, P2.

Row 8: K2, P9, K2.

Row 9: P1, C2B, K7, C2F, P1.

Row 10: K1, P11, K1.

Row 11: P1, K3, MB, K3, MB, K3, P1.

Row 12: Repeat Row 10.

Row 13: P1, T2F, K7, T2B, P1.

Row 14: Repeat Row 8.

Row 15: P2, T2F, K5, T2B, P2.

Row 16: Repeat Row 6.

Row 17: P3, T2F, K1, MB, K1, T2B, P3.

Continued...



Assembly

Sew squares together following diagram.

Row 18: Repeat Row 4.

Row 19: P4, T2F, K1, T2B, P4.

Row 20: Repeat Row 2.

Repeat Rows 1-20 for Bobble Diamond.

Square A (Make 2 of each color)

Cast on 57 sts.

Row 1 (Right Side): K1, P2, pm, work Bobble Diamond First Setup Row across next 13 sts, pm, work Little Chain First Setup Row across next 8 sts, pm, work Trinity Stitch Row 1 across next 30 sts, pm, P2, K1.

Row 2: P1, K2, work Trinity Stitch Row 2 across next 30 sts, work Little Chain 2nd Setup Row across next 8 sts, work Bobble Diamond 2nd Setup Row across next 13 sts, K2, p1.

Patterns are now in position. Continue to work 3 selvedge sts at each edge as in Rows 1 and 2 above and work correct rows of patterns until 64 rows in all have been completed (Bobble Diamond, work 2 Setup Rows, work Rows 1-20 3 times, work Rows 1 and 2 once more; Little Chain, work 2 Setup rows, work Rows 1-4 15 times, work Rows 1 and 2 once more; Trinity Stitch, work Rows 1-4 16 times). Bind off.

Square B (Make 2 of each color)

Cast on 57 sts.

Row 1 (Right Side): P1, * K1tbl, P1; repeat from * across.

Row 2: Knit.

Rows 3-64: Repeat Rows 1 and 2 for Rice stitch.

Bind off.

Edging

Round 1: With right side of assembled afghan facing, circular needle and Wheat, [pick up and K1 in the corner, pick up and K231 across to next corner, pm] 4 times – 928 sts. Place a 2nd marker to denote end of round.

Round 2: [(K1, yo, K1) all in corner st, P3, * K3, P3; repeat from * to next corner] 4 times – 936 sts.

Round 3: Work even (Purl the purls, knit the knits, and knit the corner sts.)

Round 4: [K1, (K1, yo, K1) all in center corner st, K1, work in ribbing to next corner] 4 times – 944 sts.

Round 5: Repeat Round 3.

Round 6: [K2, (K1, yo, K1) all in center corner st, K2, work in ribbing to next corner] 4 times – 952 sts.

Bind off all sts in pattern. Weave in ends.

ABBREVIATIONS

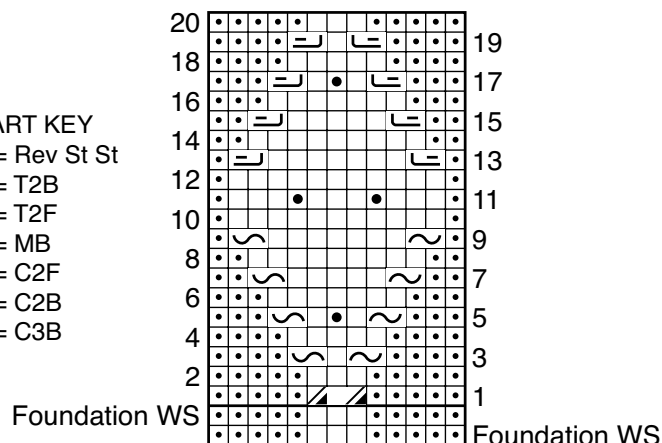
K = knit; **mm** = millimeters; **P** = purl; **pm** = place marker; **st(s)** = stitch(es); **tbl** = through back lp; **tog** = together; **yo** = yarn over; ***** = repeat whatever follows the * as indicated; **[]** = work directions in brackets the number of times specified.

A SPEARMINT	B GRAY	A LEAF	B WHEAT
B WHEAT	A LEAF	B GRAY	A SPEARMINT
A GRAY	B SPEARMINT	A WHEAT	B LEAF
B LEAF	A WHEAT	B SPEARMINT	A GRAY

ASSEMBLY DIAGRAM

CHART KEY

- ◻ = Rev St St
- ◻ = T2B
- ◻ = T2F
- ◻ = MB
- ◻ = C2F
- ◻ = C2B
- ◻ = C3B



BOBBLE DIAMOND CHART