



CROCHET | SKILL LEVEL: INTERMEDIATE

MATERIALS

Caron® Colorama Bamboo Blend™ (8 oz/227 g; 396 yds/363 m)

Sizes	XS/S	M	L	
Contrast A Dry Grass (82003)	1 305/275	1 330/300	1 360/325	ball yds/m
Sizes	XL	2/3XL	4/5XL	
Contrast A Dry Grass (82003)	1 375/340	2 415/375	2 435/395	ball(s) yds/m
Sizes	XS/S	M	L	
Contrast B Linen (82002)	1 360/325	2 390/355	2 425/385	ball(s) yds/m
Sizes	XL	2/3XL	4/5XL	
Contrast B Linen (82002)	2 450/410	2 485/440	2 515/468	ball(s) yds/m

Size U.S. 7 (4.5 mm) Susan Bates® Silvalume® crochet hook **or size needed to obtain gauge.** Susan Bates® yarn needle.

SIZES

To fit chest measurement

XS/S	28-34" [71-86.5 cm]
M	36-38" [91.5-96.5 cm]
L	40-42" [101.5-106.5 cm]
XL	44-46" [112-117 cm]
2/3XL	48-54" [122-137 cm]
4/5XL	56-62" [142-157.5 cm]

Finished chest

XS/S	37½" [95 cm]
M	41" [104 cm]
L	45" [114.5 cm]
XL	48½" [123 cm]
2/3XL	56" [142 cm]
4/5XL	63½" [161.5 cm]

ABBREVIATIONS

Approx = Approximately

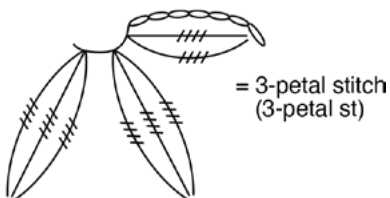
Beg = Beginning

2-Petal st = Ch 7. [(Yoh) 4 times. Draw up a loop in 7th ch from hook. (Yoh and draw through 2 loops on hook) 4 times] twice. [(Yoh) 4 times. Draw up a loop in indicated st. (Yoh and draw through 2 loops on hook) 4 times] 3 times. Yoh and draw through all 7 loops on hook. Ch 1 to close

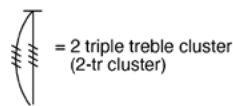
2-Petal stitch

3-Petal st =

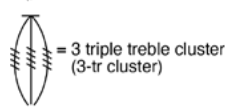
Ch 7. [(Yoh) 4 times. Draw up a loop. (Yoh and draw through 2 loops on hook) 4 times] twice in 7th ch from hook. *[(Yoh) 4 times. Draw up a loop. (Yoh and draw through 2 loops on hook) 4 times] 3 times in indicated stitch.* Rep from * to * once more. Yoh and draw through all 9 loops on hook. Ch 1 to close 3-Petal stitch.



2-tr Cluster = [(Yoh) 4 times. Draw up a loop. (Yoh and draw through 2 loops on hook) 4 times] twice in indicated stitch. Yoh and draw through all 3 loops on hook.



3-tr Cluster = [(Yoh) 4 times. Draw up a loop. (Yoh and draw through 2 loops on hook) 4 times] 3 times in indicated stitch. Yoh and draw through all 4 loops on hook.



Ch = Chain(s)

Cont = Continue(ity)

Pat = Pattern

Rem = Remaining

Rep = Repeat

Rnd(s) = Round(s)

RS = Right side

Sc = Single crochet

Sl st = Slip stitch

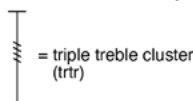
Sp(s) = Space(s)

St(s) = Stitch(es)

Triple tr = (Yoh) 4 times. Draw up a loop in indicated st. (Yoh and draw through 2 loops on hook) 5 times.

WS = Wrong side

Yoh = Yarn over hook



GAUGES

15 sc and 17 rows = 4" [10 cm].

2-tr Cluster or 3-tr Cluster = Approx 1¾"-2" [4.5-5 cm] high.

Space between centers of 2 "Full Flowers" = Approx 1¾"-2" [4.5-5 cm].

INSTRUCTIONS

The instructions are written for size XS/S. If changes are necessary for larger sizes the instructions will be written XS/S (M-L-XL-2/3XL-3/4XL). Numbers for each size are shown in the same color throughout the pattern. When only one number is given in black, it applies to all sizes.

FRONT & BACK (make alike).

Foundation row: With A, *ch 7. 2-tr Cluster in 7th ch from hook. Rep from * 9 (10-11-12-14-16) times more. **Do not turn.**

Work across foundation row as follows:

See diagram on page 5.

1st row: (RS). Ch 13.



3-Petal st, having 1st leg in 7th ch from hook, having 2nd leg in top of last 2-tr Cluster of foundation row and having 3rd leg in top of next 2-tr Cluster of foundation row.



*3-Petal st, having 1st leg at top of last st made, having 2nd leg in same sp where 3rd leg of last st was worked and 3rd leg in top of next 2-tr Cluster of foundation row.



Rep from * to end of row, with 3rd leg of last 3-Petal st in first ch of foundation row. Ch 7. 2-tr Cluster in 7th ch from hook. 1 triple tr in same sp where 3rd leg of last 3-Petal st was made. Turn. **10** (**11-12-13-15-17**) Half-Flowers.



2nd row: Ch 6 (counts as triple tr). Skip first horizontal leg. 3-tr Cluster in center of first 3-Petal st. *3-Petal st, having 1st leg in top of st just made, 2nd leg in center of 3-Petal st where previous st was made and 3rd leg in center of next 3-Petal st.



Rep from * ending with 2-Petal st. 1 triple tr in outer end of last petal. Turn. **10** (**11-12-13-15-17**) Full Flowers.



3rd row: Ch 13. 3-Petal st having 1st leg in 7th ch from hook, 2nd leg in center of last 2-Petal st and 3rd leg in center of next 3-Petal st. *3-Petal st, having 1st leg at top of last st made, 2nd leg in same sp where 3rd leg of last st was worked and 3rd leg in center of next 3-Petal st. Rep from * to end of row. Ch 7. 2-tr Cluster in 7th ch from hook. 1 triple tr in same sp where 3rd leg of last 3-Petal st was made. Turn. **9** (**10-11-12-14-16**) Full Flowers and 2 Half-Flowers at each side. Rep last 2 rows once more, then 2nd row once. Join B. Break A.



With B, rep last 2 rows for pat until work from beg measures approx 15" [38 cm], ending on a WS row. Fasten off.

See diagrams on page 6.

Shape armholes: 1st row: (RS). Skip first **1** (**1-1-1-2-2**) horizontal Petal(s). Join B with sl st to center of next 3-Petal st.



Ch 13. 3-Petal st having 1st leg in 7th ch from hook, 2nd leg in same sp as yarn join and 3rd leg in center of next 3-Petal st. *3-Petal st, having 1st leg at top of last st made, 2nd leg in same sp where 3rd leg of last st was worked and 3rd leg in center of next 3-Petal st. Rep from * to last **1** (**1-1-1-2-2**) horizontal Petal(s). Ch 7. 2-tr Cluster in 7th ch from hook. 1 triple tr in same sp where 3rd leg of last 3-Petal st was made. Turn. Leave rem **1** (**1-1-1-2-2**) horizontal Petal(s) unworked.

2nd row: Ch 6 (counts as triple tr). Skip first horizontal leg. 3-tr Cluster in center of first 3-Petal st. *3-Petal st, having 1st leg in top of st just made, 2nd leg in center of 3-Petal st where previous st was made and 3rd leg in center of next 3-Petal st. Rep from * ending with 2-Petal st. 1 triple tr in outer end of last Petal. Turn. **8** (**9-10-11-11-13**) Full Flowers. **3rd row:** Ch 13. 3-Petal st having 1st leg in 7th ch from hook, 2nd leg in center of last 2-Petal st and 3rd leg in center of next 3-Petal st. *3-Petal st, having 1st leg at top of last st made, 2nd leg in same sp where 3rd leg of last st was worked and 3rd leg in center of next 3-Petal st. Rep from * to end of row. Ch 7. 2-tr Cluster in 7th ch from hook. 1 triple tr in same sp where 3rd leg of last 3-Petal st was made. Turn. **7** (**8-9-10-10-12**) Full Flowers and 2 Half-Flowers at each side. Rep last 2 rows of pat until armhole measures approx **5** (**5-7-7-7-9**)" [**12.5** (**12.5-18-18-18-23**) cm], ending on a WS row.

Shape neck: 1st row: (RS). Ch 13. 3-Petal st having 1st leg in 7th ch from hook, 2nd leg in center of last 2-Petal st and 3rd leg in center of next 3-Petal st. *3-Petal st, having 1st leg at top of last st made, 2nd leg in same sp where 3rd leg of last st was worked and 3rd leg in center of next 3-Petal st. Rep from * **0 (0-1-1-1-1)** time(s). Turn. Fasten off.

With RS facing skip next **4 (5-4-5-5-7)** horizontal Petals. Join B with sl st to center of next 3-Petal st.

1st row: Ch 7. 2-tr Cluster in same sp as joining sl st. 3-tr Cluster in center of next 3-Petal st. *3-Petal st, having 1st leg at top of last st made, 2nd leg in same sp where 3-tr Cluster or 3rd leg of last st was worked and 3rd leg in center of next 3-Petal st. Rep from * **0 (0-1-1-1-1)** time(s) more. 2-Petal st. 1 triple tr in outer end of last Petal. Fasten off.

Sew shoulder and side seams.

Neck edging: With RS facing, join B with sl st at right shoulder seam.

1st rnd: Ch 1. 1 sc in same sp as sl st. Work **83 (97-83-97-97-125)** sc evenly around neck edge. Join with sl st to first sc. **84 (98-84-98-98-126)** sc.

2nd and 3rd rnds: Ch 1. 1 sc in each sc around. Join with sl st to first sc. Fasten off at end of 3rd rnd.

Armhole edging: With RS facing, join B with sl st at side seam of armhole.

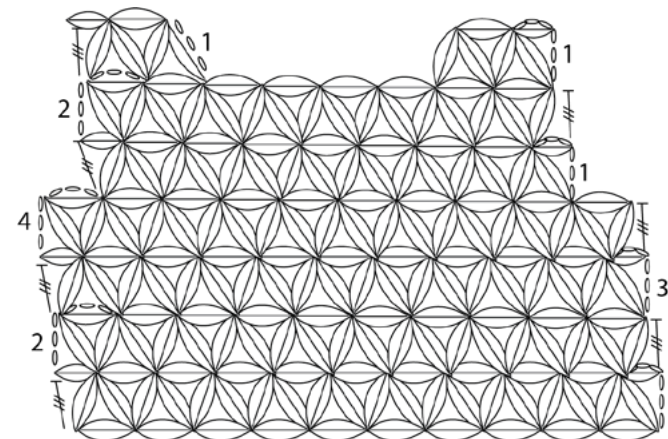
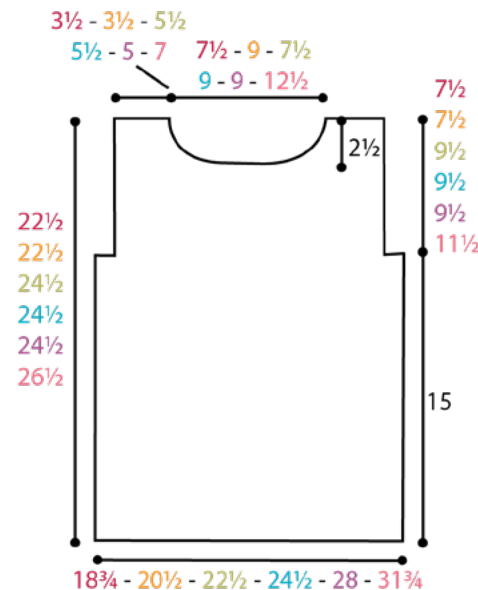
1st rnd: Ch 1. 1 sc in same sp as sl st. Work **71 (71-83-83-95-119)** sc evenly around armhole. Join with sl st to first sc. **72 (72-84-84-96-120)** sc.

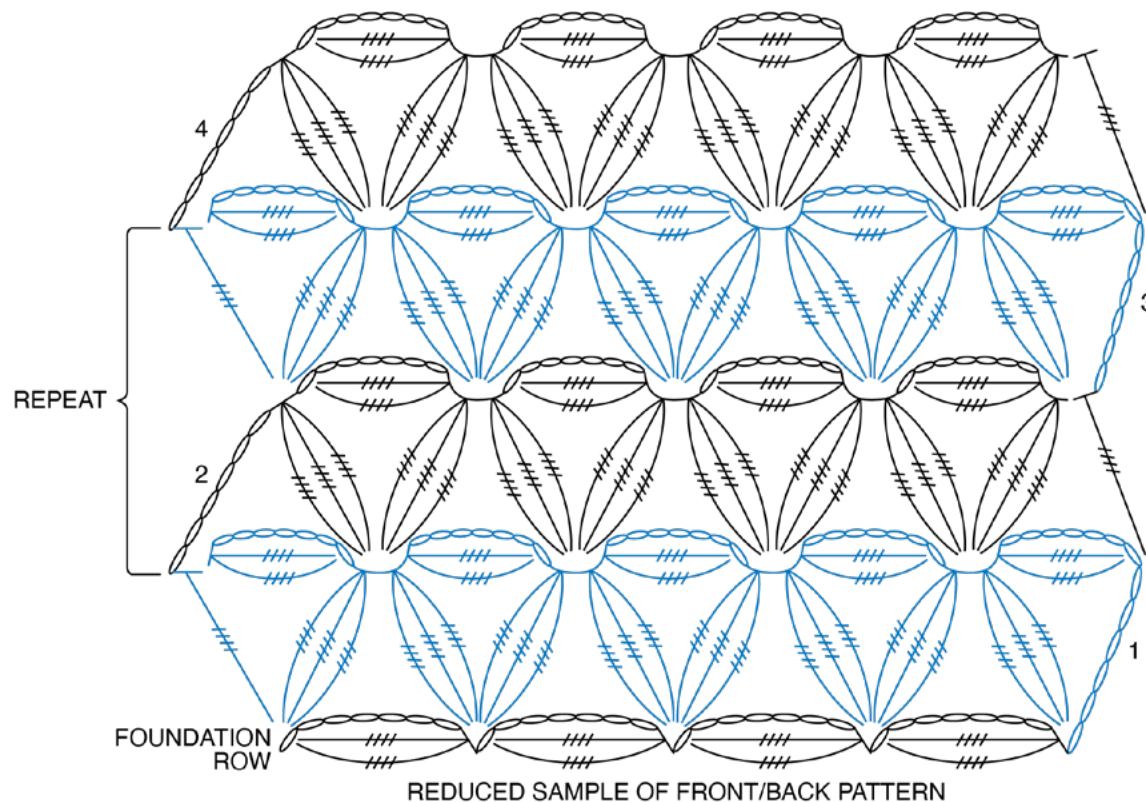
2nd and 3rd rnds: Ch 1. 1 sc in each sc around. Join with sl st to first sc. Fasten off at end of 3rd rnd.

Bottom edging: With RS facing, join A with sl st at side seam of Body.

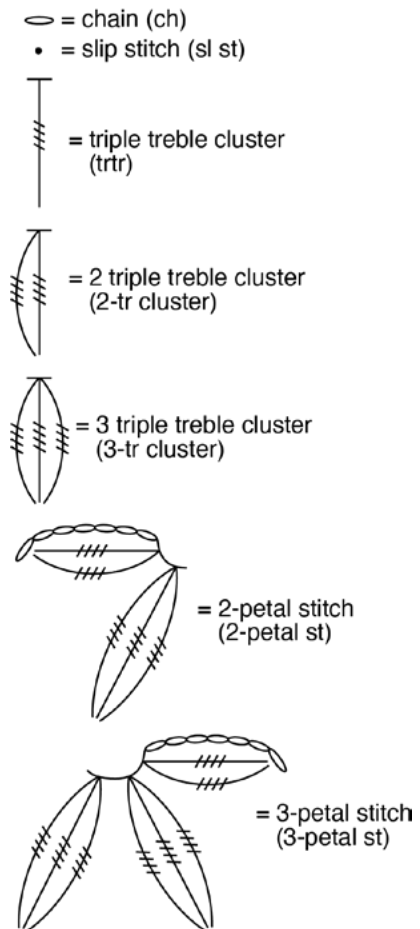
1st rnd: Ch 1. 1 sc in same sp as sl st. Work **125 (139-153-167-195-223)** sc evenly around lower edge. Join with sl st to first sc. **126 (140-154-168-196-224)** sc.

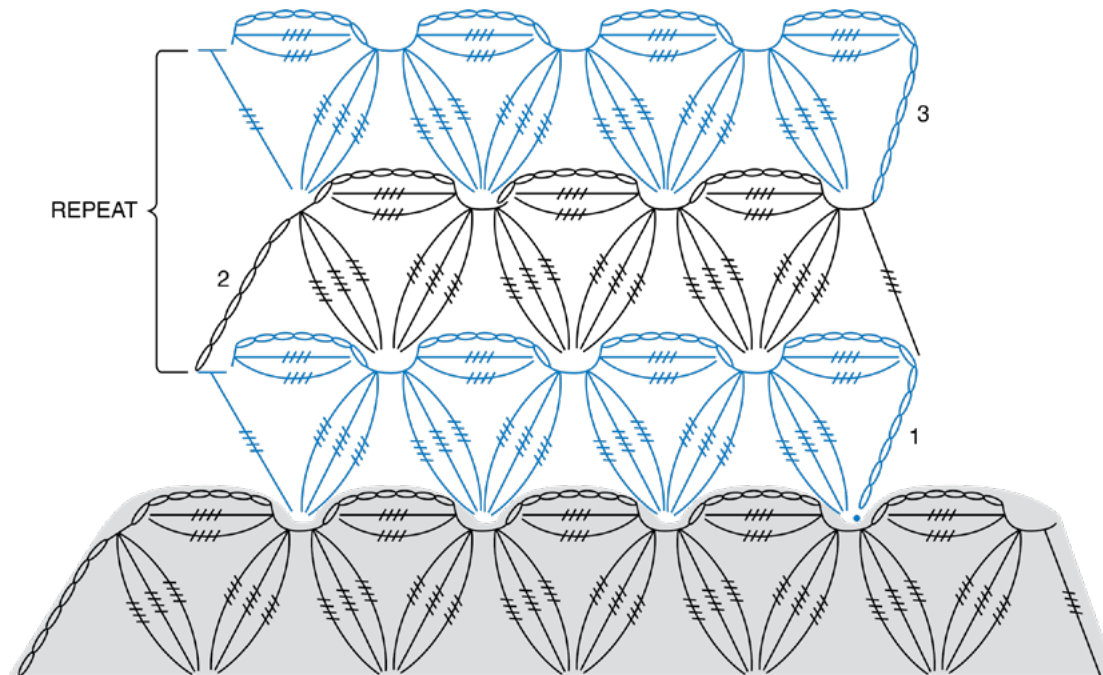
2nd and 3rd rnds: Ch 1. 1 sc in each sc around. Join with sl st to first sc. Fasten off at end of 3rd rnd.



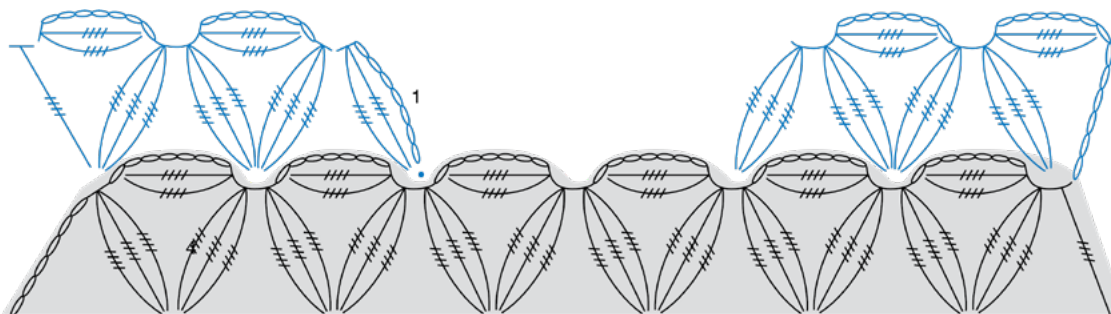


STITCH KEY





REDUCED SAMPLE OF ARMHOLE SHAPING
(SIZES XS/S, M, L & XL)
(For sizes 2/3XL & 4/5XL: leave 2 horizontal Petals unworked)



REDUCED SAMPLE OF SHAPE NECK PATTERN
(SIZES XS/S & M)
(For sizes L, XL, 2/3XL & 4/5XL: there will be 1 more 3-petal st)

